

Package-Type Air Conditioner *Commercial Dehumidifier*

Standard

Down-Blasting

Air Handling Unut



TATUNG CO.

22 Chungshan North Road, 3rd Sec., Taipei 104, Taiwan, R.O.C
Tel : 886-2-25925252 Ext.2660
Fax : 886-2-25984436
E-mail : calvin.ho@tatung.com

AIR CONDITIONER TAO YUAN PLANT

38 Lane 1119 Daquan Road, Ta Yuan, Tao Yuan Country 337,
Taiwan, R.O.C.
Tel : 886-3-3861111 Fax : 886-3-3864901
http : //www.tatung.com

2015.03 No.492-12110-24D

Your best choice Your best partner

Features:

1 LED micro-computer touch control and room temperature indication

- Adopting LED micro-computer temperature control owns sensitive control and can indicate and adjust temperature.
- Own low temperature anti-frozen protection function to avoid freezing on the evaporator.
- Three minutes protection design and abnormal protection indication can prolong compressor life.
- The dual systems adopt two stages of micro-computer temperature control that can adjust according to real loading to save energy.
- Adopt dual systems that have independent refrigerant circuit. They own the characteristics that compressor running can select start sequence to average compressor running time and prolong compressor life.

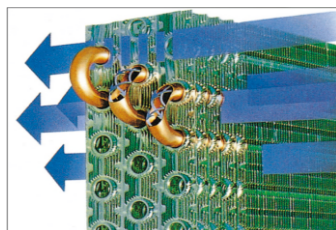
3 Typical fan design

Adopting the most progressive ringless fan rotor and streamline air discharge grill can get the high-efficiency air volume with static pressure. And the air will not produce the vortex phenomenon to minimize the friction sound of airflow.



5 Great cooling capacity

The cooling capacity is great by using the new multi-fin and inner groove tube of the high efficiency heat exchanger.



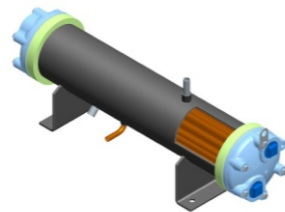
2 High efficiency compressor

Using the most advanced high efficiency scroll type compressor can operate, suck, compress, and exhaust in step to achieve low noise, low vibration, zero breakdown and energy saving effect. It can also make the system strong and cold and energy-saving.



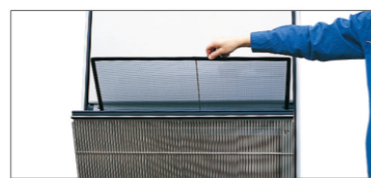
4 Anti-corrosive condenser design

Steel shell is treated by anti-corrosive coating and copper tube adopted by high efficiency Cu alloy possesses high anti-corrosive characteristics.



6 Excellent anti-dust and dehumidifying effect

High quality filter can remove dust completely and protect health as well as maintain easily. The dehumidifying effect is appropriate for island type climate and good for health.



Specifications

Model	TC-3NA	TC-5NA	TC-5NAF	TC-8NA	TC-8NAF	TC-10NA	TC-10NAF
Power source	3 ø 4W 380V 50Hz						
Cooling capacity (kW)	11.0	17.4	17.4	28.0	28.0	35.0	35.0
Condenser water (L/min)	39	60	60	100	100	128	128
Running current (A)	4.5	6.3	6.7	11.5	11.9	15.8	16.3
Total input (kW)	2.39	3.70	3.87	5.90	6.09	7.77	8.23
COP (w/w)	4.60	4.70	4.50	4.75	4.60	4.50	4.25
COMP.	Type	Rotary	Hermetic Scroll				
	Quantity	1					
Capacity step (%)	100,0						
Evaporator	Cross fin coil						
Condenser	Shell & tube type						
Fan type	Multi-blades	Dual suction multi-blades					
Output (kW)	0.105	0.40	0.40	0.75	0.75	0.75	0.75
Air volume (CMM)	32	40	40	72	72	90	90
External static pressure (pa)	0	0	50	0	50	0	50
Plenum chamber	Accessory						
Electrical heater	Optional						
Humidifier	Optional						
Thermostat	LED display micon controller						
Starting type	Direct						
Safety devices	Coil anti-frozen protection Compressor thermal protector, High & low pressure switch Compressor 3 minutes protection fusing plug, Reversal phase protection						
Condenser water pipe	PT 1B	PT 1 1/4B		PT 1 1/2B			
Draining pipe	PS 1B	PS 1B		PS 1B			
Refrigerant & Control	R-410A/Capillary tube						
DIM.	Height (mm)	1,870	1,870	1,870	1,870	1,870	1,870
	Width (mm)	950	950	950	1,470	1,470	1,470
	Depth (mm)	510	510	510	510	510	510
Weight (kg)	175	215	215	313	313	340	340

Notes:

1. Cooling capacity is based on the condition at indoor air temperature 27°C DB/19.0°C WB; while condenser inlet water temperature is at 30°C and outlet water temperature is at 35°C.
2. Owing to technological advances, the above specifications might be updated without early notice.
3. 1kW=860 kcal/hr; 1kcal/hr=3.968 Btu/hr.

■ Specifications

Model	TC-15NA	TC-15NAF	TC-20NA	TC-20NAF	TC-30NAF
Power source	3 ø 4W 380V 50Hz				
Cooling capacity (kW)	52.5	52.5	70.0	70.0	105.0
Condenser water (L/min)	190	190	257	257	380
Running current (A)	22.2	23.0	31.5	32.5	48.3
Total input (kW)	11.93	12.62	15.90	16.83	25.5
COP (w/w)	4.40	4.16	4.40	4.16	4.12
COMP.	Type	Hermetic Scroll			
	Quantity	2			
Capacity step (%)	100,50,0				
Evaporator	Cross fin coil				
Condenser	Shell & tube type				
Fan type	Dual suction multi-blades				
Output (kW)	2.2	2.2	3.7	3.7	5.5
Air volume (CMM)	135	135	180	180	270
External static pressure (pa)	0	80	0	80	150
Plenum chamber	Optional	—	Optional	—	—
Electrical heater	Optional				
Humidifier	Optional				
Thermostat	LED display micon controller				
Starting type	Sequence direct				
Safety devices	Coil anti-frozen protection Compressor thermal protector, High & low pressure switch Compressor 3 minutes protection fusing plug, Reversal phase protection				
Condenser water pipe	PT 2B		PT 2B		PT 2 1/2B
Draining pipe	PS 1B		PS 1B		PS 1B
Refrigerant & Control	R-410A/Capillary tube				R-410A/Thermal expansion valve
DIM.	Height (mm)	1,870+320(chamber)	1,870	1,870+320(chamber)	1,870
	Width (mm)	1,470	1,470	1,810	1,810
	Depth (mm)	720	720	795	795
Weight (kg)	460	460	576	576	860

Notes:

- Cooling capacity is based on the condition at indoor air temperature 27°C DB/19.0°C WB; while condenser inlet water temperature is at 30°C and outlet water temperature is at 35°C.
- Owing to technological advances, the above specifications might be updated without early notice.
- 1kW=860 kcal/hr; 1kcal/hr=3.968 Btu/hr.

■ Specifications

Model	TC-40NAF	TC-50NAF
Power source	3 ø 4W 380V 50Hz	
Cooling capacity (kW)	142.0	175.0
Condenser water (L/min)	515	650
Running current (A)	79.1	94.0
Total input (kW)	35.06	43.6
COP (w/w)	4.05	4.01
COMP.	Type	Hermetic Scroll
	Quantity	3
Capacity step (%)	100,66,33,0	
Evaporator	Cross fin coil	
Condenser	Shell & tube type	
Fan type	Dual suction multi-blades	
Output (kW)	7.5	11.0
Air volume (CMM)	360	450
External static pressure (pa)	200	200
Plenum chamber	—	—
Electrical heater	Optional	
Humidifier	Optional	
Thermostat	LED display micon controller	
Starting type	Sequence direct	
Safety devices	Coil anti-frozen protection Compressor thermal protector, High & low pressure switch Compressor 3 minutes protection fusing plug, Reversal phase protection	
Condenser water pipe	PT 3B	
Draining pipe	PS 1 1/4B	
Refrigerant & Control	R-410A/Thermal expansion valve	
DIM.	Height (mm)	1,876
	Width (mm)	1,960
	Depth (mm)	1,275
Weight (kg)	1,150	1,250

Notes:

- Cooling capacity is based on the condition at indoor air temperature 27°C DB/19.0°C WB; while condenser inlet water temperature is at 30°C and outlet water temperature is at 35°C.
- Owing to technological advances, the above specifications might be updated without early notice.
- 1kW=860 kcal/hr; 1kcal/hr=3.968 Btu/hr.

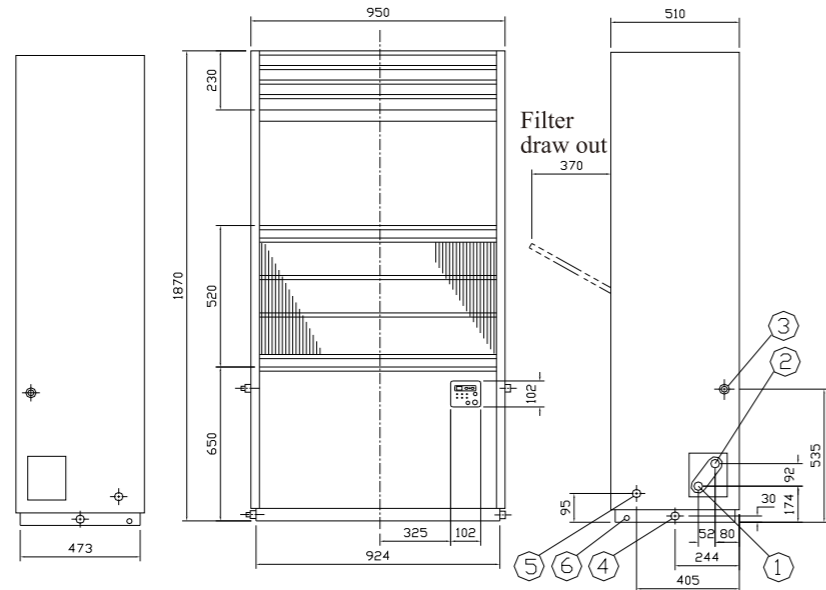
■ Dimensions(mm)

Symbols :

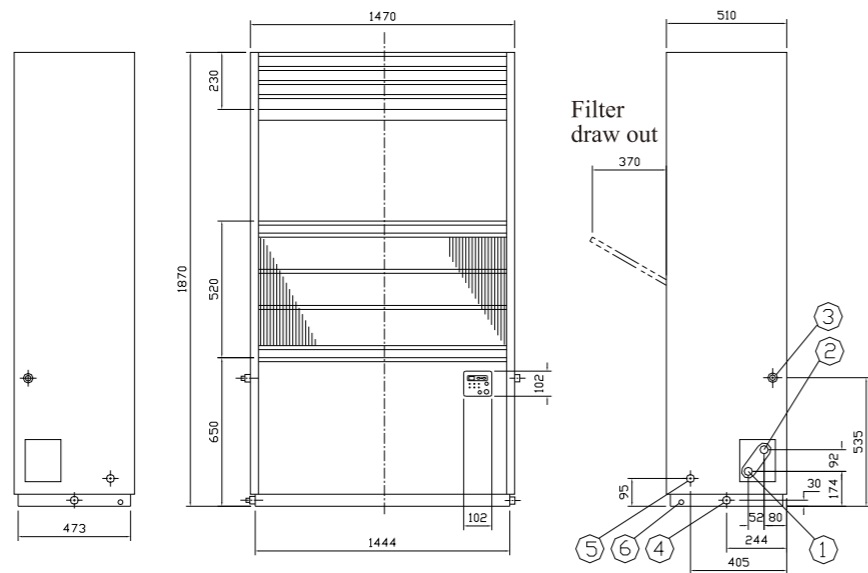
- ①. Condenser water inlet
- ②. Condenser water outlet
- ③. Upper draining pipe outlet
- ④. Lower draining pipe outlet
- ⑤. Power line inlet
- ⑥. Grounding terminal bolt



TC-3NA
TC-5NA(F)



TC-8NA(F)
TC-10NA(F)



■ Dimensions(mm)

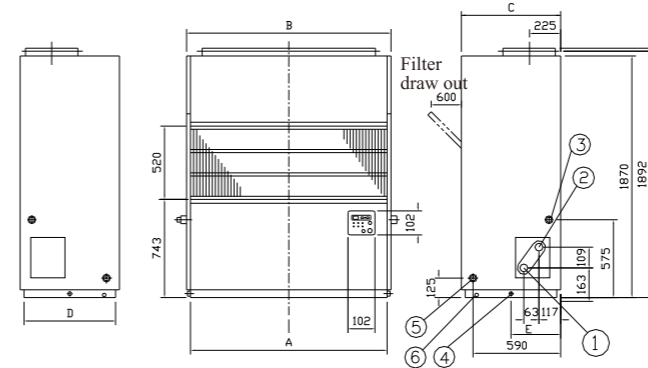
Symbols :

- ①. Condenser water inlet
- ②. Condenser water outlet
- ③. Upper draining pipe outlet
- ④. Lower draining pipe outlet
- ⑤. Power line inlet
- ⑥. Grounding terminal bolt

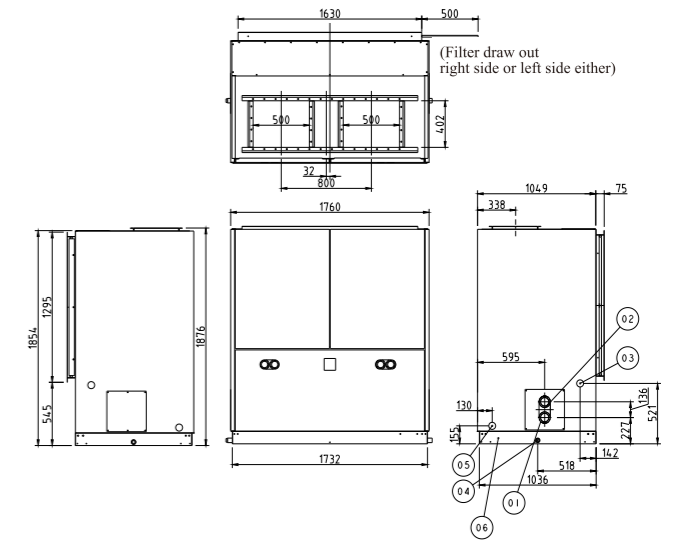


TC-15NA(F)
TC-20NA(F)

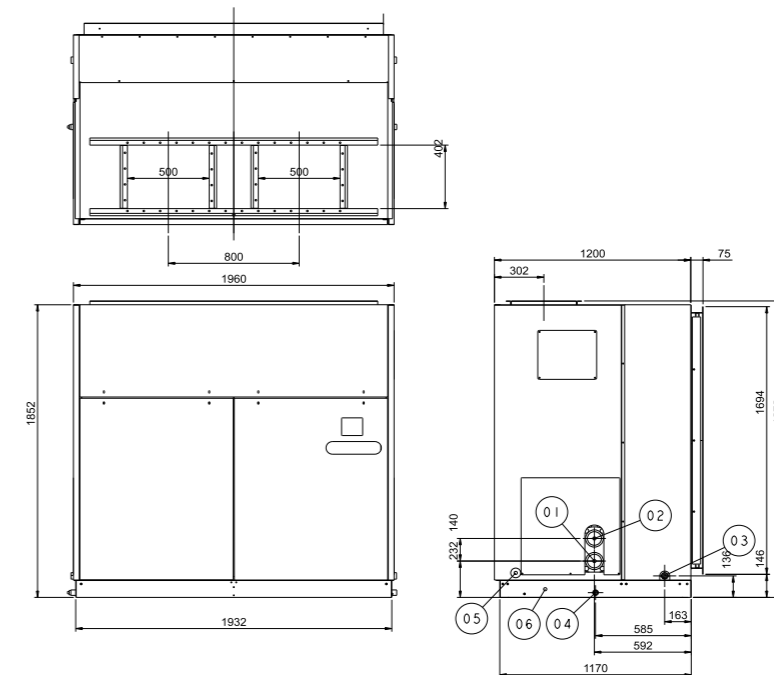
Model	dim.	A	B	C	D	E
TC-15NA(F)		1445	1470	720	678	350
TC-20NA(F)		1785	1810	795	753	388



TC-30NA(F)



TC-40,50NAF



Specifications

Model	TC-10CS	TC-10CSF	TC-20CS	TC-20CSF	
Power source	3ø 4W 380V 50Hz				
Cooling capacity (kW)	35.2	35.2	70.3	70.3	
Condenser water (L/min)	128	128	257	257	
Running current (A)	16.3	18.2	31.5	33.3	
Total input (kW)	8.23	8.98	17.0	18.5	
COP (w/w)	4.28	3.92	4.13	3.80	
COMP.	Type	Hermetic Scroll		Hermetic Scroll	
	Quantity	1		2	
Capacity step (%)	100,0		100,50,0		
Evaporator	Cross fin coil		Cross fin coil		
Condenser	Shell & tube type		Shell & tube type		
Fan type	Dual suction multi-blades		Dual suction multi-blades		
Output (kW)	0.75	0.75	3.7	3.7	
Air volume (CMM)	90	90	180	180	
External static pressure (pa)	0	50	0	80	
Thermostat	LED display micon controller				
Starting type	Sequence direct				
Safety devices	Coil anti-frozen protection Compressor thermal protector, High & low pressure switch Compressor 3 minutes protection fusing plug, Reversal phase protection				
Condenser water pipe	PT 1 1/2B	PT 1 1/2B	PT 2B	PT 2B	
Draining pipe	PS 1B	PS 1B	PS 1B	PS 1B	
Refrigerant	R-407C	R-407C	R-407C	R-407C	
DIM.	Height (mm)	1,870	1,870	1,870 + 320(chamber)	1,870
	Width (mm)	1,470	1,470	1,810	1,810
	Depth (mm)	510	510	720	720
Weight (kg)	280	280	570	570	

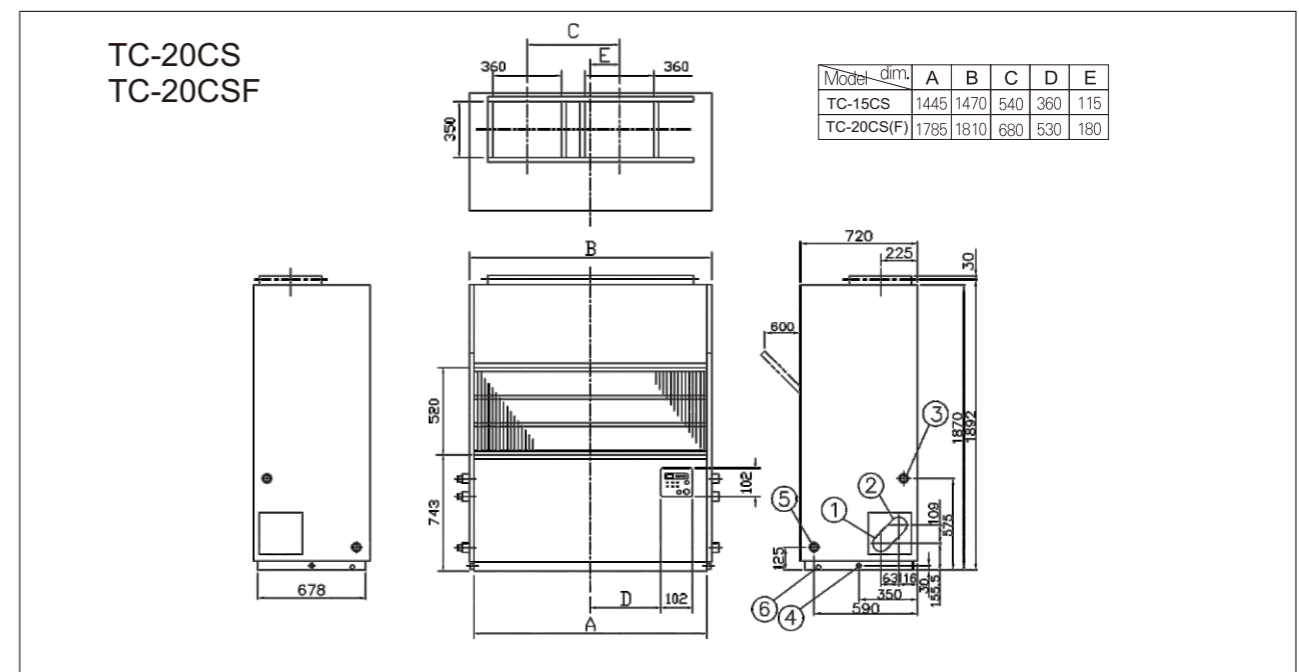
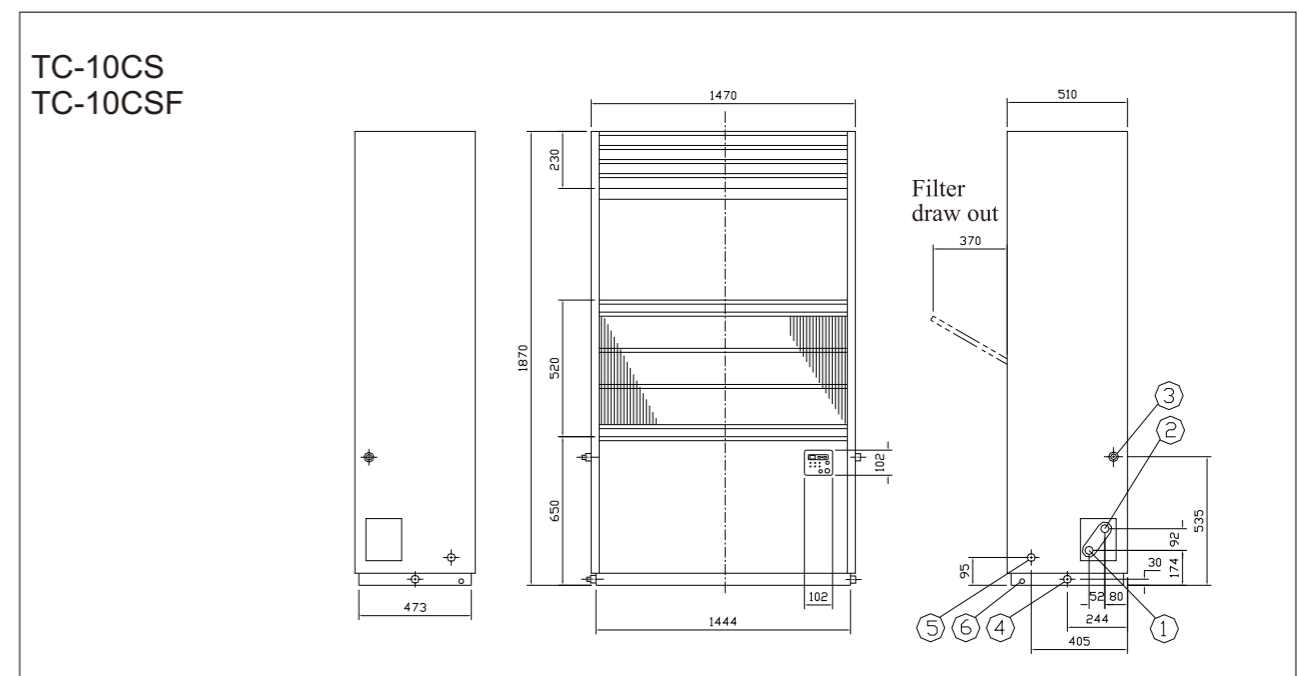
Notes:

- Cooling capacity is based on the condition at indoor air temperature 27°C DB/19.0°C WB; while condenser inlet water temperature is at 30°C and outlet water temperature is at 35°C.
- Owing to technological advances, the above specifications might be updated without early notice.
- 1kW=860 kcal/hr; 1kcal/hr=3.968 Btu/hr.

Dimensions(mm)

Symbols :

- Condenser water inlet
- Condenser water outlet
- Upper draining pipe outlet
- Lower draining pipe outlet
- Power line inlet
- Grounding terminal bolt



Features:

1 LED micro-computer touch control and room temperature indication

- Adopting LED micro-computer temperature control owns sensitive control and can indicate and adjust temperature.
- Own low temperature anti-frozen protection function to avoid freezing on the evaporator.
- Three minutes protection design and abnormal protection indication can prolong compressor life.
- The dual systems adopt two stages of micro-computer temperature control that can adjust according to real loading to save energy.
- Adopt dual systems that have independent refrigerant circuit. They own the characteristics that compressor running can select start sequence to average compressor running time and prolong compressor life.

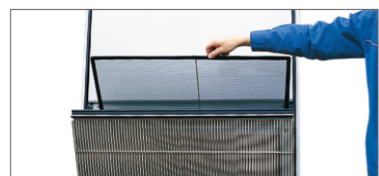
3 Typical fan design

Adopting the most progressive ringless fan rotor and streamline air discharge grill can get the high-efficiency air volume with static pressure. And the air will not produce the vortex phenomenon to minimize the friction sound of airflow.



5 Excellent anti-dust and dehumidifying effect

High quality filter can remove dust completely and protect health as well as maintain easily. The dehumidifying effect is appropriate for island type climate and good for health.



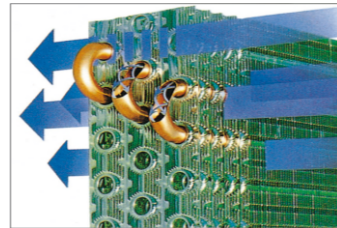
2 High efficiency compressor

Using the most advanced high efficiency scroll type compressor can operate, suck, compress, and exhaust in step to achieve low noise, low vibration, zero breakdown and energy saving effect. It can also make the system strong and cold and energy-saving.



4 Great cooling capacity

The cooling capacity is great by using the new multi-fin and inner groove tube of the high efficiency heat exchanger.



Specifications

Cooling capacity (kW)		14.0	14.0	25.0	25.0	29.0	29.0	
Running current (A)		7.4	7.7	12.6	13.3	16.5	17.3	
Power consumption (kW)		4.14	4.27	6.66	7.10	8.79	9.21	
COP (W/W)		3.38	3.28	3.75	3.52	3.30	3.15	
Indoor unit (single)	Model	TFP-5NA	TFP-5NAF	TFP-8NA	TFP-8NAF	TFP-10NA	TFP-10NAF	
	Power source	3 ø 4W 380V 50Hz						
	Evaporator	Cross fin coil						
	Fan	Type	Multi-blade					
		Output (kW)	0.4	0.4	0.75	0.75	0.75	0.75
		Air volume (CMM)	40	40	72	72	90	90
		EX. Static pressure (pa)	0	50	0	50	0	50
	Dim.	Height (mm)	1,870	1,870	1,870	1,870	1,870	1,870
		Width (mm)	950	950	1,470	1,470	1,470	1,470
		Depth (mm)	510	510	510	510	510	510
Weight (kg)	135	135	210	210	210	210		
Outdoor unit	Model	RP-5NA		RP-8NA		RP-10NA		
	Power Source	3 ø 4W 380V 50Hz						
	Condenser	Cross fin coil						
	Comp.	Type	Hermetic Scroll					
		Quantity	1					
	Fan	Type	Propeller Fan					
		Output x Quantity (W)	84x2	84x2	355	355	355	355
	Dim.	Height (mm)	1,320	1,320	1,308	1,308	1,308	1,308
		Width (mm)	930	930	1,685	1,685	1,685	1,685
		Depth (mm)	370	370	630	630	630	630
Weight (kg)	120	120	190	190	220	220		
Power Providing pattern	Outdoor unit and indoor unit							
Thermostat	LED display micon controller							
Refrigerant & Control	R-410A/Capillary tube							
Safety devices	Coil anti-frozen protector, High & low pressure switch, Comp. internal protector, Comp. 3-minute protector, Reverse phase protector							
Piping	Gas side	ø 19.1	ø 19.1	ø 19.1x2	ø 19.1x2	ø 19.1x2	ø 19.1x2	
	Liquid side	ø 12.7	ø 12.7	ø 15.9x1	ø 15.9x1	ø 15.9x1	ø 15.9x1	
	Indoor unit draining	PS 1B						

Notes:

1. Cooling capacity is based on indoor air temperature 27°C DB / 19°C WB, outdoor air temperature 35°C DB.
2. Cooling operation temperature limits: indoor 21~32°C DB, outdoor 21~43°C DB.
3. If the cooling requirement is under 20°C, additional design is required to protect the unit. Please have a check with our sales.
4. If the piping distance of refrigerant between indoor and outdoor unit is longer than 30m, additional design is required to protect the unit. Please notify our sales in advance.
5. Owing to technological advances, the above specifications might be updated without early notice.
6. 1kW=860kcal/hr, 1kcal/hr=3.968 Btu/hr.
7. We also serve some optional specifications, such as : 'constant temperature and humidity control' , 'automatically restart after power failure' , 'year-round running mode' ... , etc. If you need it, please notify us in advance.

Specifications

Cooling capacity (kW)	50.0	50.0	58.0	58.0		
Running current (A)	26.5	27.3	33.5	35.0		
Power consumption (kW)	14.70	15.15	17.58	18.41		
COP (W/W)	3.40	3.30	3.30	3.15		
Indoor unit (single)	Model	TFP-15NA	TFP-15NAF	TFP-20NA	TFP-20NAF	
	Power source	3 ø 4W 380V 50Hz				
	Evaporator	Cross fin coil				
	Fan	Type	Multi-blade			
		Output (kW)	2.2	2.2	3.7	3.7
		Air volume (CMM)	135	135	180	180
		EX. Static pressure (pa)	0	80	0	80
	Dim.	Height (mm)	1,870+320(chamber)	1,870	1,870+320(chamber)	1,870
		Width (mm)	1,810	1,810	1,810	1,810
		Depth (mm)	795	795	795	795
Weight (kg)	320	320	320	320		
Outdoor unit	Model	RP-8NA x 2		RP-10NA x 2		
	Power Source	3 ø 4W 380V 50Hz				
	Condenser	Cross fin coil				
	Comp.	Type	Hermetic Scroll			
		Quantity	2			
	Fan	Type	Propeller Fan			
		Output x Quantity	355x 2	355x 2	355x 2	355x 2
	Dim.	Height (mm)	1,308	1,308	1,308	1,308
		Width (mm)	1,685	1,685	1,685	1,685
		Depth (mm)	630	630	630	630
Weight (kg)	190x 2	190x 2	220x 2	220x 2		
Power Providing pattern	Outdoor unit and indoor unit					
Thermostat	LED display micon controller					
Refrigerant & Control	R-410A/Capillary tube					
Safety devices	Coil anti-frozen protector, High & low pressure switch, Comp. internal protector, Comp. 3-minute protector, Reverse phase protector					
Piping	Gas side	ø 19.1x4		ø 19.1x4		
	Liquid side	ø 15.9x2		ø 15.9x2		
	Indoor unit draining	PS 1B				

Notes:

- Cooling capacity is based on indoor air temperature 27°C DB / 19°C WB, outdoor air temperature 35°C DB.
- Cooling operation temperature limits: indoor 21~32°C DB, outdoor 21~43°C DB.
- If the cooling requirement is under 20°C, additional design is required to protect the unit. Please have a check with our sales.
- If the piping distance of refrigerant between indoor and outdoor unit is longer than 30m, additional design is required to protect the unit. Please notify our sales in advance.
- Owing to technological advances, the above specifications might be updated without early notice.
- 1kW=860kcal/hr, 1kcal/hr=3.968 Btu/hr.
- We also serve some optional specifications, such as : 'constant temperature and humidity control' , 'automatically restart after power failure' , 'year-round running mode' ... , etc. If you need it, please notify us in advance.

Specifications

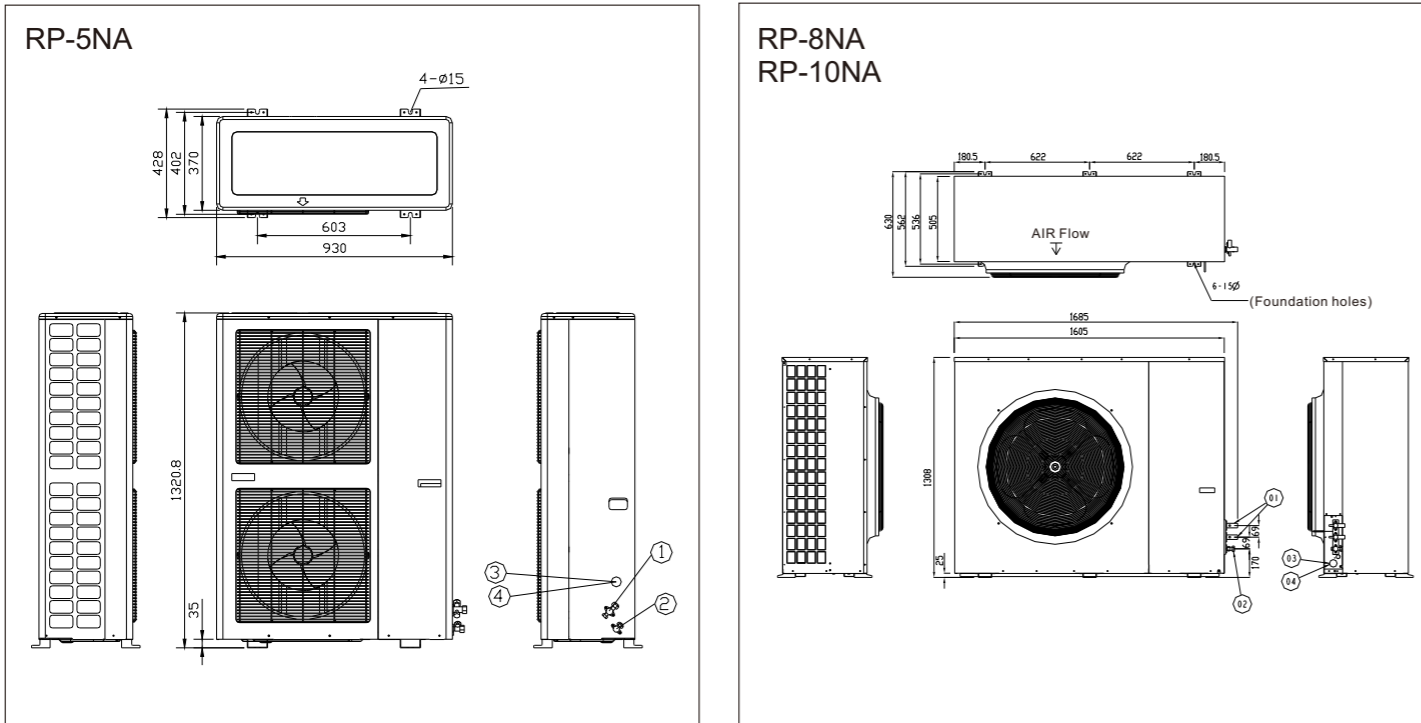
Cooling capacity (kW)	88.0		
Running current (A)	59.0		
Power consumption (kW)	31.70		
COP (W/W)	2.78		
Indoor unit (single)	Model	TFP-30NAF	
	Power source	3 ø 4W 380V 50Hz	
	Evaporator	Cross fin coil	
	Comp.	Type	Hermetic Scroll
		Quantity	1
	Fan	Type	Multi-blade
		Output (kW)	5.5
		Air volume (CMM)	270
		EX. Static pressure (pa)	150
	Dim.	Height (mm)	1,870
Width (mm)		1,760	
Depth (mm)		1,124	
Weight (kg)	640		
Outdoor unit	Model	RS-30NA	
	Power Source	3 ø 4W 380V 50Hz	
	Condenser	Cross fin coil	
	Fan	Type	Propeller Fan
		Output x Quantity (W)	790 x 2
	Dim.	Height (mm)	1,417
		Width (mm)	2,000
		Depth (mm)	960
	Weight (kg)	340	
	Power Providing pattern	Outdoor unit and indoor unit	
Thermostat	LED display micon controller		
Refrigerant & Control	R-410A/Thermal expansion valve		
Safety devices	Coil anti-frozen protector, High & low pressure switch, Comp. internal protector, Comp. 3-minute protector, Reverse phase protector		
Piping	Gas side	ø 28.6 x 2	
	Liquid side	ø 19.1 x 1	
	Indoor unit draining	PS 1B	

Notes:

- Cooling capacity is based on indoor air temperature 27°C DB / 19°C WB, outdoor air temperature 35°C DB.
- Cooling operation temperature limits: indoor 21~32°C DB, outdoor 21~43°C DB.
- If the cooling requirement is under 20°C, additional design is required to protect the unit. Please have a check with our sales.
- If the piping distance of refrigerant between indoor and outdoor unit is longer than 30m, additional design is required to protect the unit. Please notify our sales in advance.
- Owing to technological advances, the above specifications might be updated without early notice.
- 1kW=860kcal/hr, 1kcal/hr=3.968 Btu/hr.
- We also serve some optional specifications, such as : 'constant temperature and humidity control' , 'automatically restart after power failure' , 'year-round running mode' ... , etc. If you need it, please notify us in advance.

Outdoor units dimensions(mm)

- Symbols : ①.Gas side pipe connector
 ②.Liquid side pipe connector
 ③.Power line wiring inlet
 ④.Grounding bolt terminal

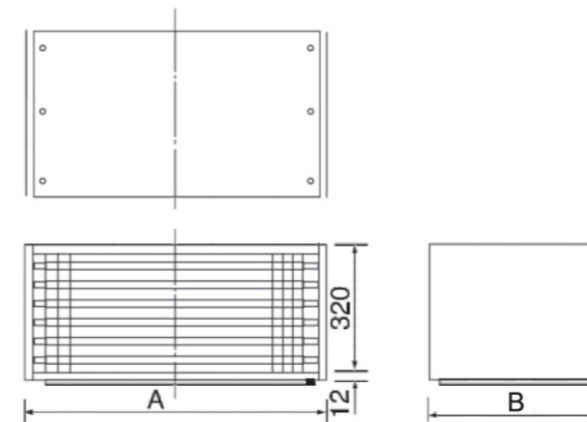
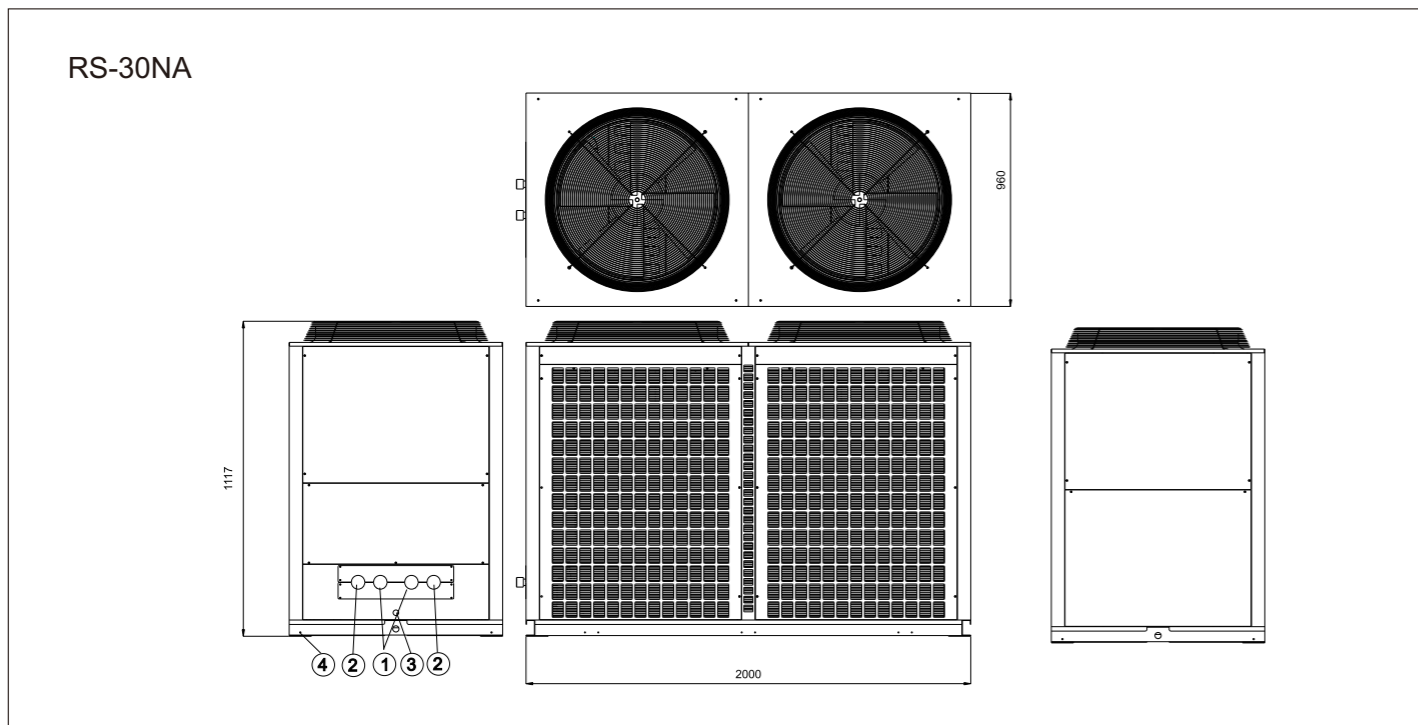


Plenum Chamber (Optional for free blow type)



Dimensions:

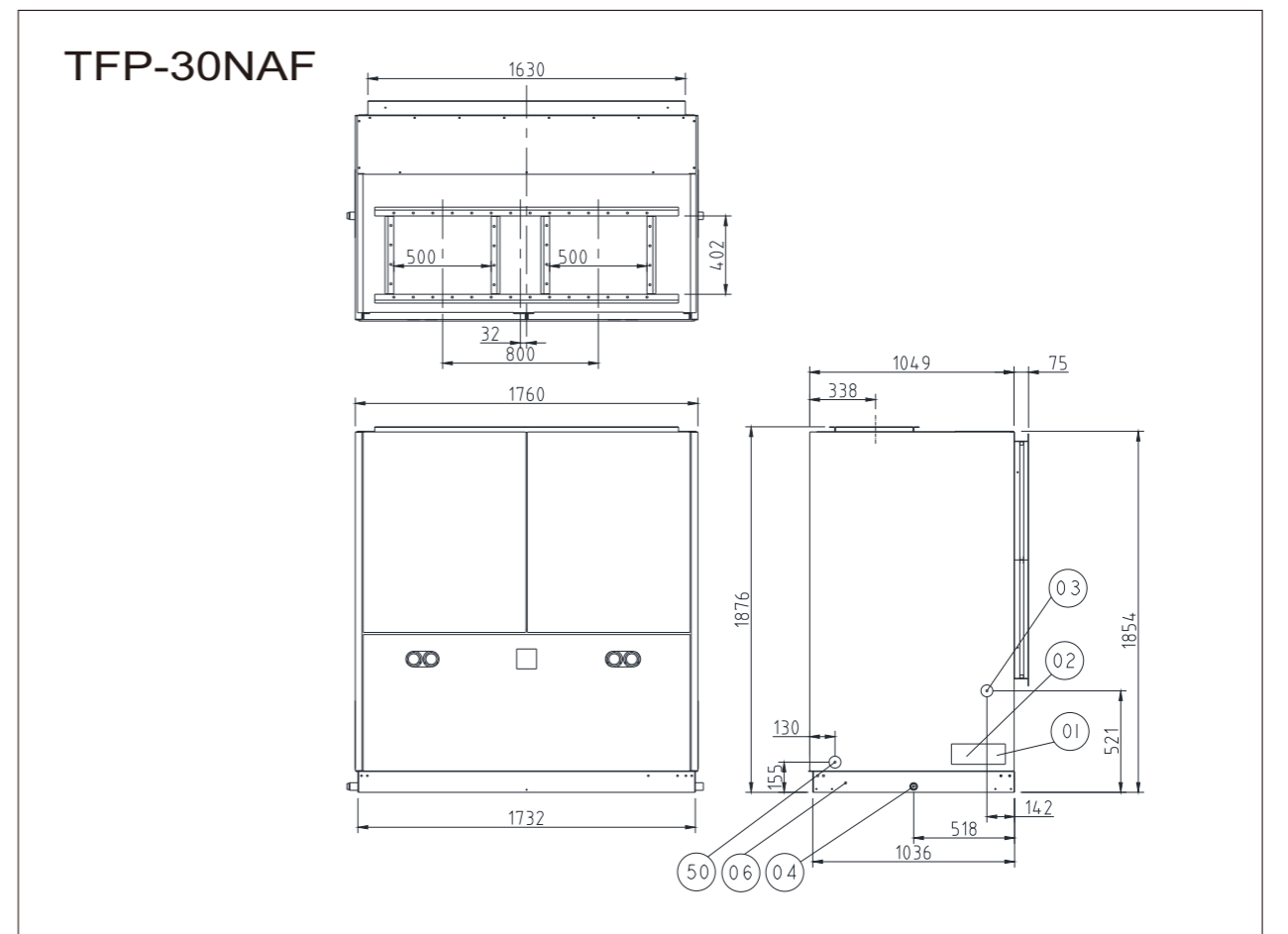
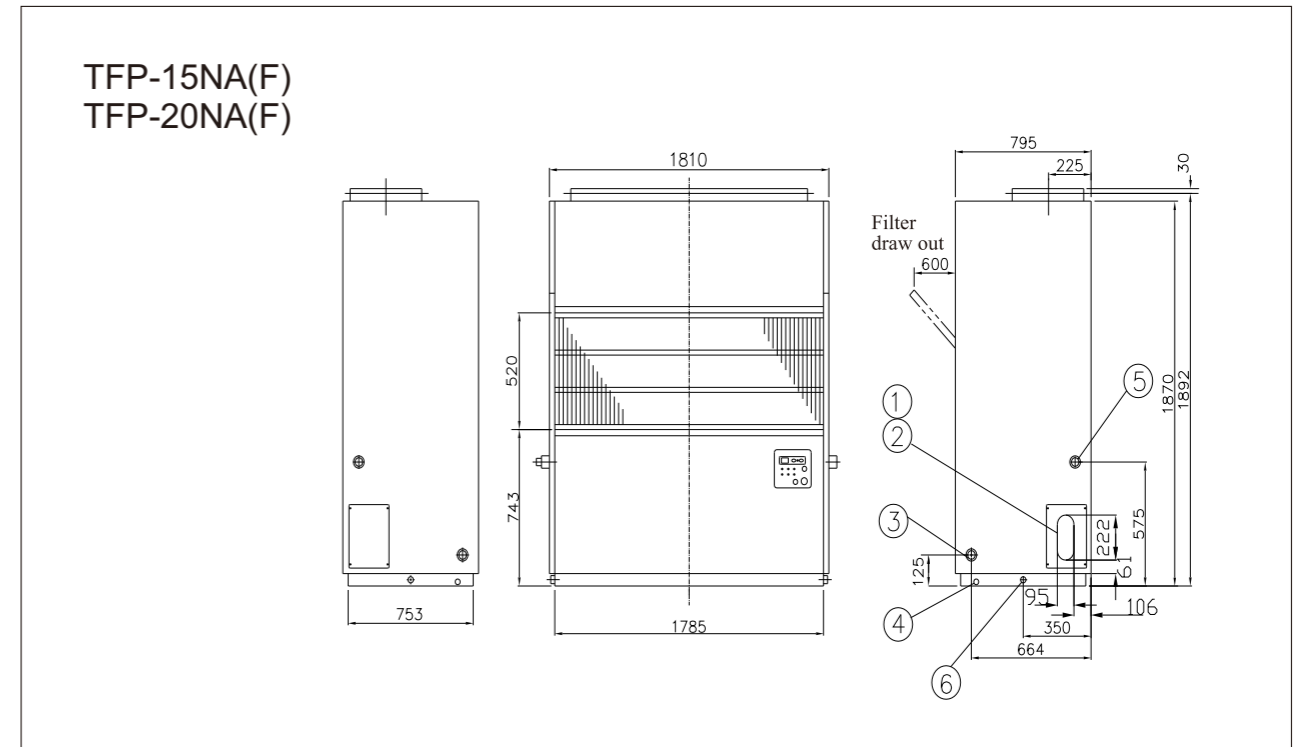
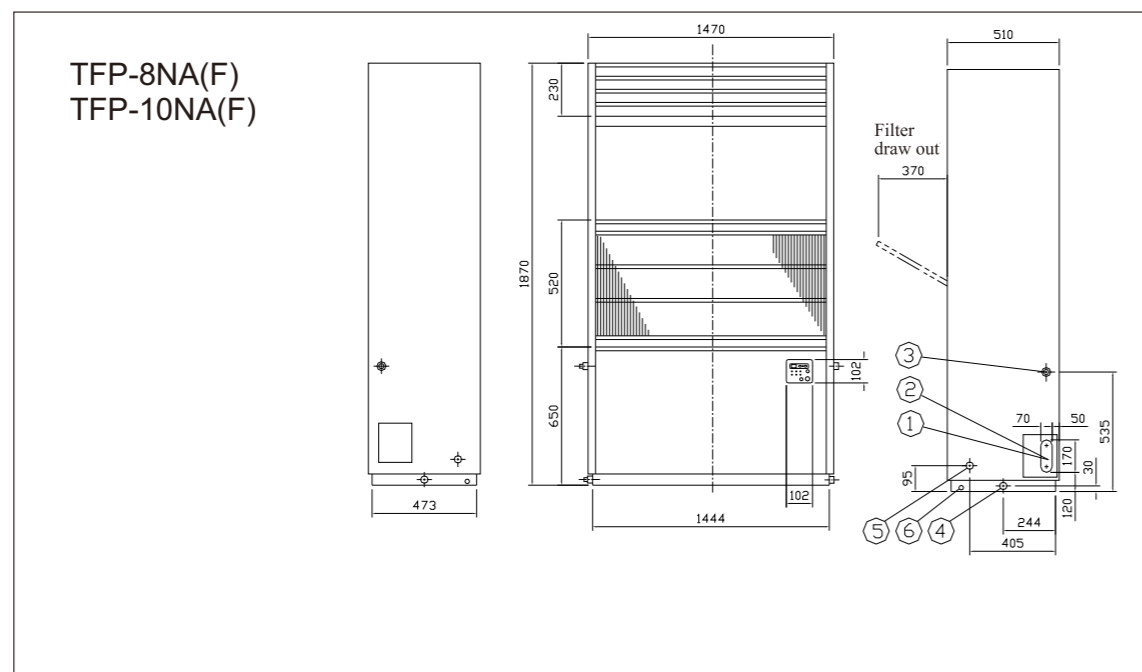
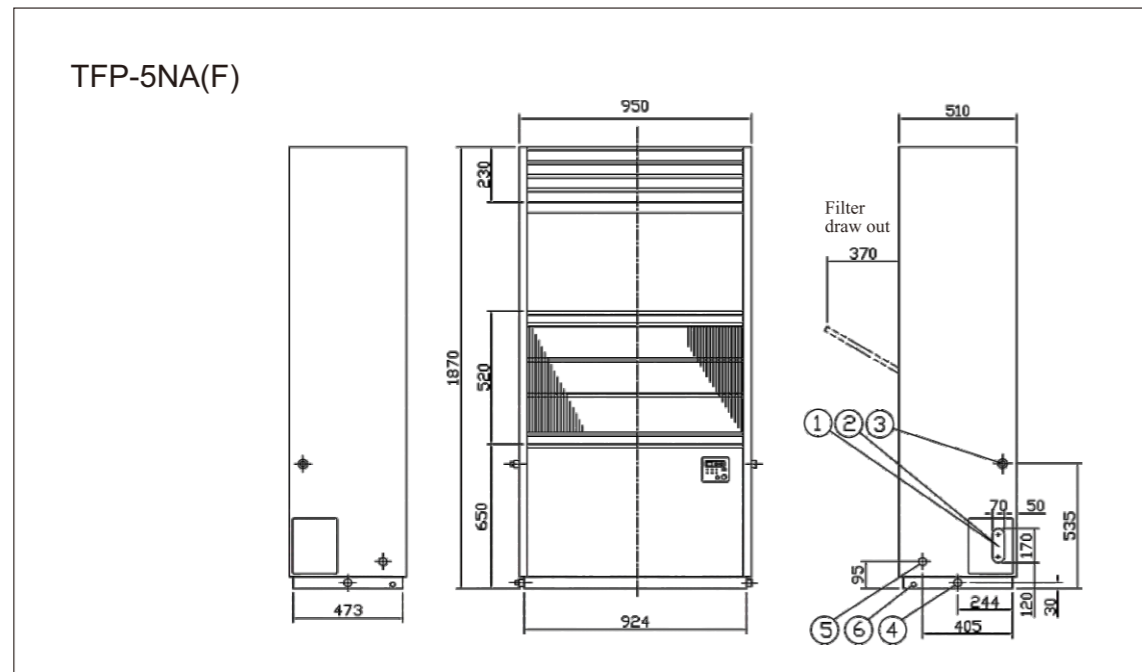
Model	Dimensions:			Fitting units
	Height	Width (A)	Depth (B)	
FA-15	320	1,470	720	TC-15NA
FA-20	320	1,810	720	TC-20CS,TFP-20CS
FA-20N	320	1,810	795	TC-20NA,TFP-15NA,TFP-20NA



Indoor units dimensions(mm)

Symbols :

- ①.Liquid side pipe inlet
- ②.Gas side pipe inlet
- ③.Upper draining pipe
- ④.Lower draining pipe
- ⑤.Power line wiring inlet
- ⑥.Grounding terminal bolt



Specifications

Cooling capacity (kW)	29.3	29.3	58.6	58.6		
Running current (A)	20.2	22.1	41.8	45.1		
Power consumption (kW)	10.3	11.05	19.8	21.3		
COP (W/W)	2.84	2.65	2.96	2.75		
Indoor unit (single)	Model	TFP-10CS	TFP-10CSF	TFP-20CS	TFP-20CSF	
	Power source	3ø 4W 380V 50Hz				
	Evaporator	Cross fin coil				
	Fan	Type	Multi-blade			
		Output (kW)	0.75	0.75	3.7	3.7
		Air volume (CMM)	90	90	180	180
		EX. Static pressure (pa)	0	50	0	80
	Dim.	Height (mm)	1,870	1,870	1,870 + 320(chamber)	1,870
		Width (mm)	1,470	1,470	1,810	1,810
		Depth (mm)	510	510	720	720
Weight (kg)	145	145	350	350		
Outdoor unit	Model	RP-10CS	RP-10CS	RP-10CSx2	RP-10CSx2	
	Power Source	3ø 4W 380V 50Hz				
	Condenser	Cross fin coil		Cross fin coil		
	Comp.	Type	Hermetic Scroll		Hermetic Scroll	
		Quantity	1		2	
		Ability is adjusted %	100,0		100,50,0	
	Fan	Type	Propeller Fan		Propeller Fan	
		Output x Quantity (W)	355		355	
	Dim.	Height (mm)	1,060		1,060	
		Width (mm)	1,600		1,600	
Depth (mm)		562		562		
Weight (kg)	190		190			
Power Providing pattern	Outdoor unit and indoor unit					
Thermostat	LED display micon controller					
Refrigerant & Control	R-407C/Capillary tube					
Safety devices	Coil anti-frozen protector, High & low pressure switch, Comp. internal protector, Comp. 3-minute protector, Reverse phase protector					
Piping	Gas side	ø 19.1x2	ø 19.1x2	ø 19.1x2	ø 19.1x2	
	Liquid side	ø 15.9x1	ø 15.9x1	ø 15.9x1	ø 15.9x1	
	Indoor unit draining	PS 1B	PS 1B	PS 1B	PS 1B	

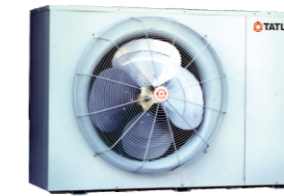
Notes:

- Cooling capacity is based on indoor air temperature 27°CDB / 19°C WB, outdoor air temperature 35°CDB.
- Cooling operation temperature limits: indoor 21~32°CDB, outdoor 21~43°CDB.
- If the cooling requirement is under 20°C, additional design is required to protect the unit. Please have a check with our sales.
- If the piping distance of refrigerant between indoor and outdoor unit is longer than 30m, additional design is required to protect the unit. Please notify our sales in advance.
- Owing to technological advances, the above specifications might be updated without early notice.
- 1kW=860kcal/hr, 1kcal/hr=3.968 Btu/hr.
- We also serve some optional specifications, such as :
'constant temperature and humidity control' , 'automatically restart after power failure' , 'year-round running mode' ... ,
etc. If you need it, please notify us in advance.

Indoor units dimensions(mm)

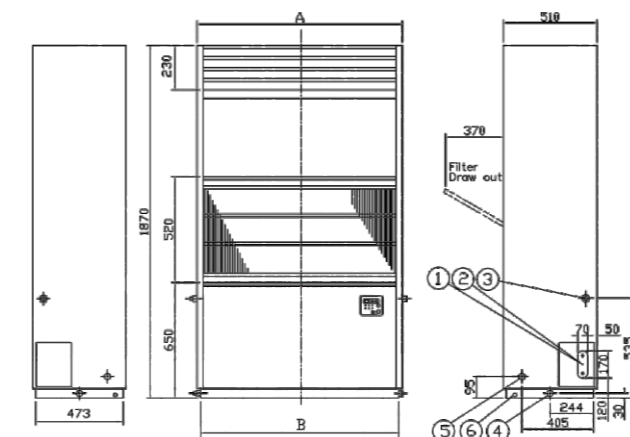
Symbols :

- Liquid side pipe inlet
- Gas side pipe inlet
- Upper draining pipe
- Lower draining pipe
- Power line wiring inlet
- Grounding terminal bolt



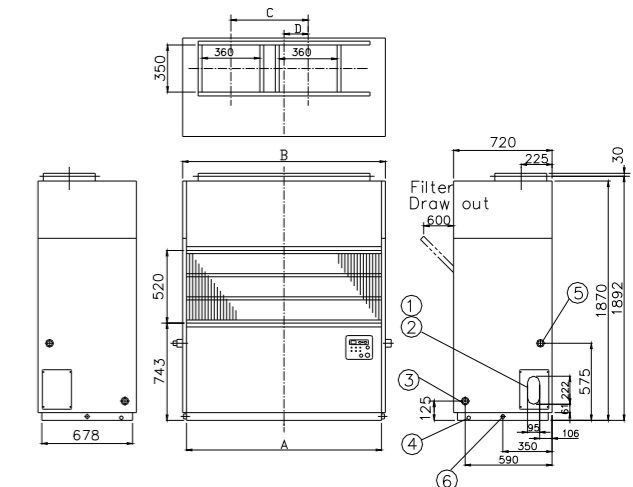
TFP-10CS
TFP-10CSF

Dimensions:	A	B
TFP-10CS(F)	1470	1444

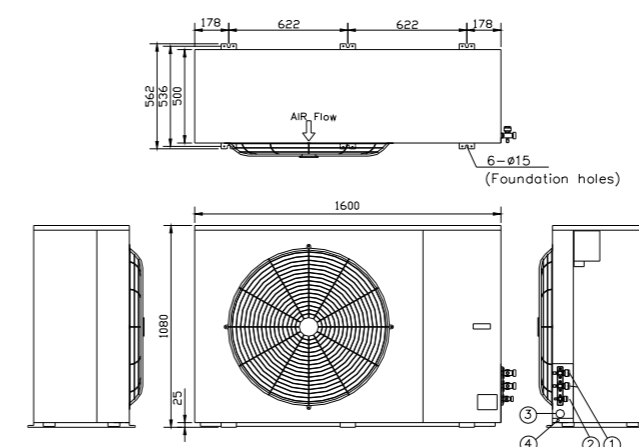


TFP-20CS
TFP-20CSF

Dimensions	A	B	C	D
TFP-15CS	1445	1470	540	115
TFP-20CS(F)	1785	1810	680	180

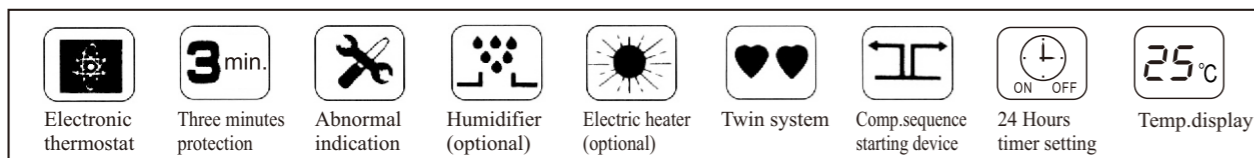


RP-10CS

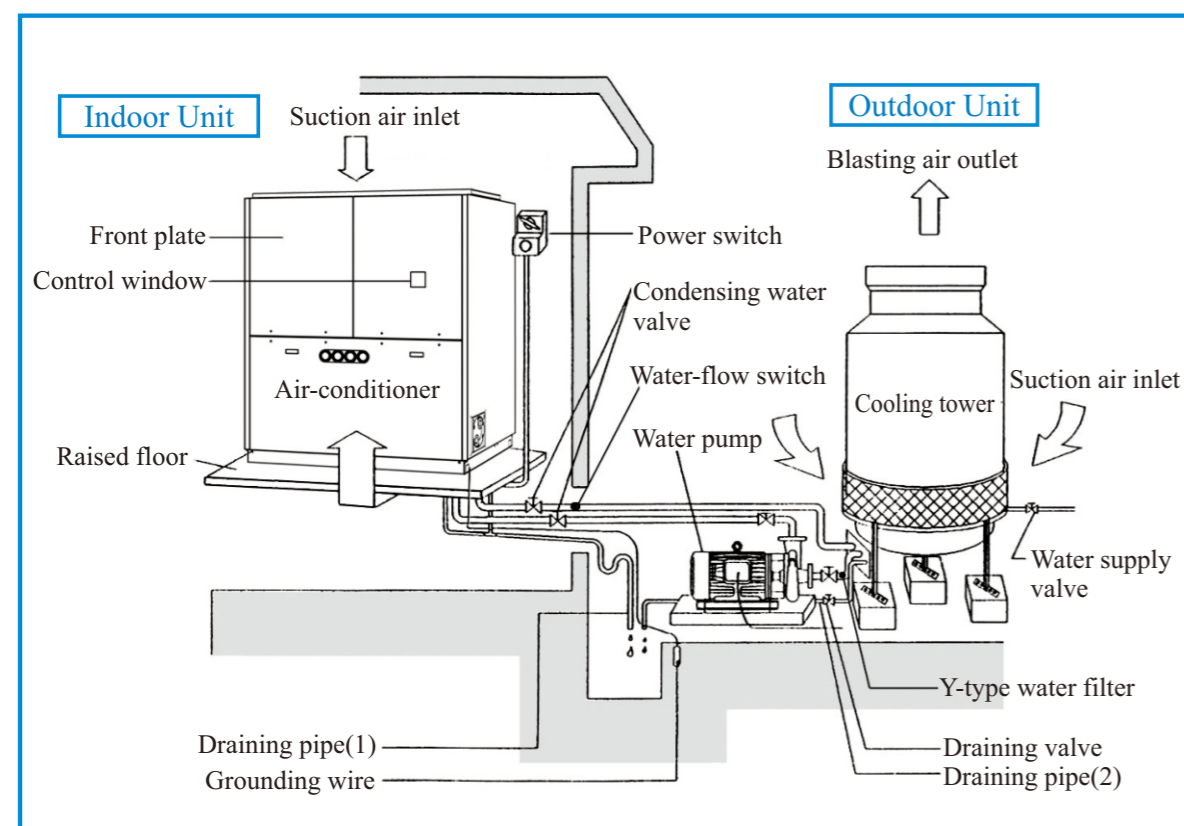


Features:

- ▶ Designed for raised floor, with high S.H.F. and large air volume flow reat.
- ▶ Draining basins of evaporator and unit base are made of stainless material.
- ▶ Adopt LED-display controller to make operation easy and precise.
- ▶ Anti-frozen protection is set on the evaporator coil to avoid breakdown of system.
- ▶ Twin-compressor design and alternate starting sequence prolong the life of compressor.
- ▶ Air flow velocity passing through the evaporator is less than 2 m/s to avoid water being blown out.
- ▶ Constant temperature and humidity control.



Installation Illustration



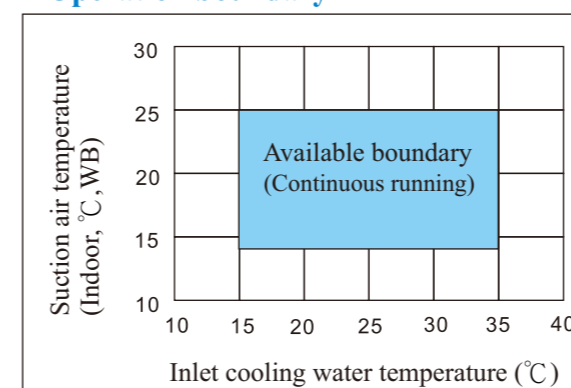
Specifications

Model	TCC-5NAF	TCC-8NAF	TCC-10NAF	TCC-15NAF	TCC-20NAF	TCC-30NAF	
Power source	3ø 4W 380V 50Hz						
Cooling capacity (kW)	18.0	30.0	35.2	53.2	70.3	105.5	
Running current (A)	8.4	13.8	16.2	26.0	36.9	53.5	
Power consumption (kW)	4.38	7.17	8.6	13.8	18.2	28.1	
COP (W/W)	4.10	4.18	4.09	3.86	3.86	3.75	
Compressor	Type	Scroll type					
	Quantity	1	2	2	2	2	
Fan	Type	Dual Suction Multi-Blades					
	Motor output(kW)	0.75	1.5	2.2	3.7	5.5	7.5
	Air volume (CMM)	70	110	140	210	280	420
	ESP. ** pa	80	80	80	100	100	200
Evaporator type	Fin-tube coil type						
Condenser type	Shell and tube						
Refrigerant & control	R-410A / Thermal expansion valve						
Cooling water flow rate(L/min)	60	100	128	190	257	380	
Cooling head lose (mAq)	3.2	3.4	3.5	3.1	3.4	5.0	
Controller	LED						
Starting type	Sequence direct						
Safety devices	Coil anti-frozen protection, High & low pressure switch, Compressor thermal protector, Overload switch, 3-minute restarting protection, Fan motor overload switch, Reversal phase protection, Fusing plug.						
Air filter	All-Aluminum foil						
Piping	Condenser	PT 1 1/2B	PT 1 1/2B	PT 2B	PT 2 1/2B	PT 2 1/2B	
	Drain pipe	PS 1B	PS 1B	PS 1B	PS 1B	PS 1B	
Dim.	HxWxD (mm)	1,762x1,320x854	1,911x1,621x942	1,855x1,857x1,200	2,153x2,200x1,367		
Weight (kg)		330	410	480	560	680	1155

Notes :

1. Cooling Capacity is based on indoor air temperature 27°C DB / 19°C WB, entering condenser water temperature 30°C and leaving condenser water temperature 35°C.
 2. Condenser water flow rate is based on entering condenser water temperature 32°C and leaving condenser water temperature 37°C.
 3. Special requirements are also available, please notify in advance.
 4. 1kW=860 kcal/hr ; 1kca/hr=3.968Btu/hr.
 5. Sensible Heat Factor(S.H.F)=0.9
 6. Owing to technological advances, the above specifications might be updated without early notice.
- ** ESP means external static pressure.

Operation boundary

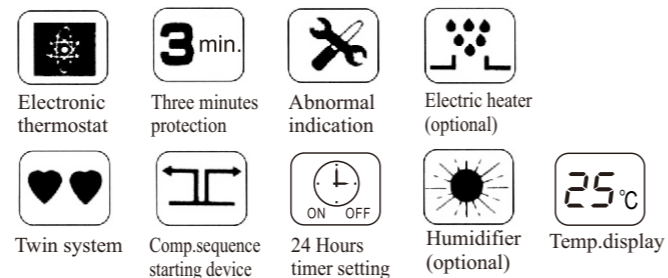


Features:

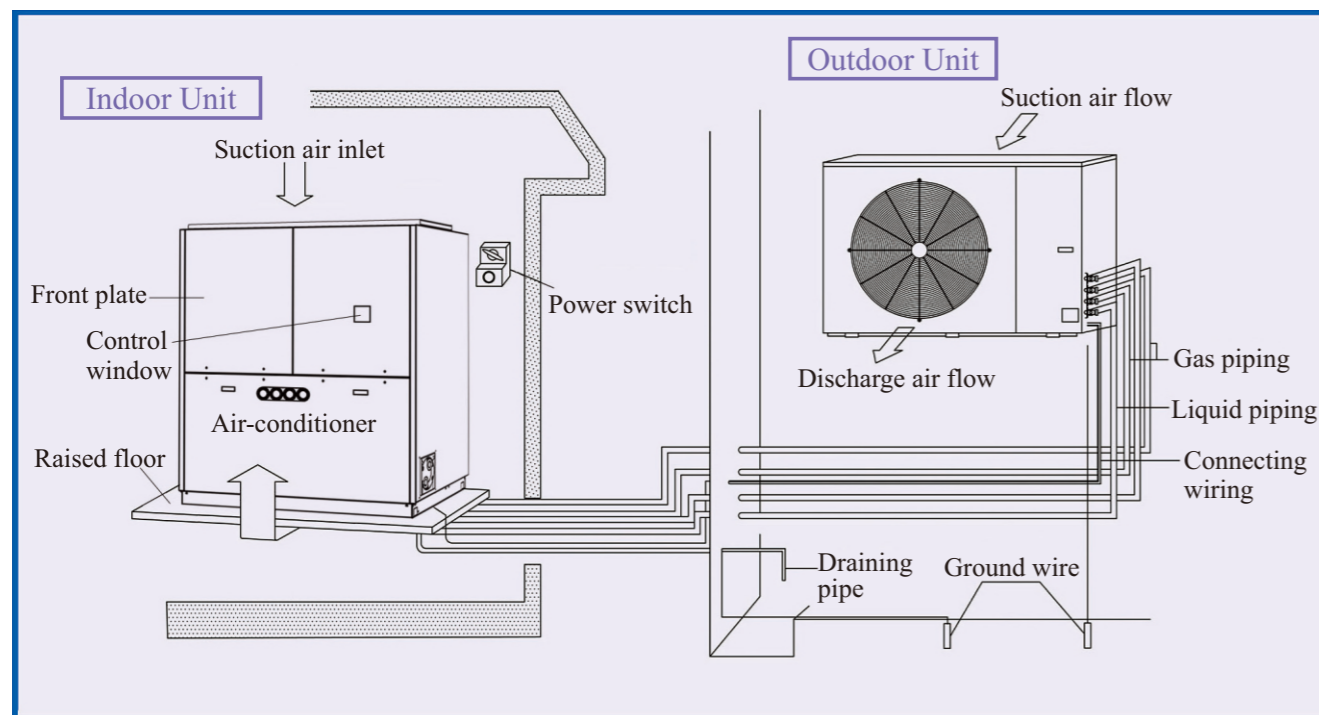
- ▶ Designed for raised floor, with high S.H.F. and large air volume flow rate.
- ▶ Draining basins of evaporator and unit base are made of stainless material.
- ▶ Precisely control makes constant temperature and humidity.
- ▶ Anti-frozen protection is set on the evaporator coil to avoid breakdown of the system.
- ▶ Twin-compressor design and alternate starting sequence prolong the life of compressor.
- ▶ Air flow velocity passing through the evaporator is less than 2 m/s to avoid water being blown out.



Outdoor



Installation Illustration



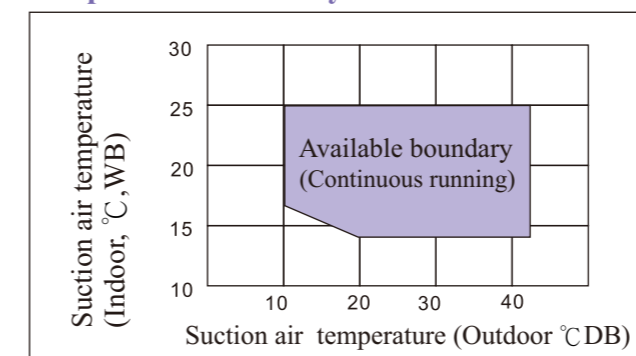
Specifications

Model	Indoor unit	TSC-5NAF	TSC-8NAF	TSC-10NAF	TSC-15NAF	TSC-20NAF	TSC-30NAF	
	Outdoor unit	RP-5NA	RS-8NA	RS-10NA	RP-8NA x2	RP-10NA x2	RS-30NA	
Power source	3ø 4W 380V 50Hz							
Cooling capacity (kW)		15.0	26.4	32.6	50.0	65.1	97.6	
Running current (A)		11.8	16.3	20.5	30.3	41.0	66.2	
Power Input (kW)		5.26	9.27	11.1	17.2	22.3	36.6	
COP	W/W	2.85	2.85	2.94	2.90	2.92	2.67	
Indoor Unit	Evaporator	Cross fin coil						
	Type	Multi-Blade						
	Motor(kW)	0.75	1.5	2.2	3.7	5.5	7.5	
	Air volume(CMM)	70	110	140	210	280	420	
	ESP ** (pa)	80	80	80	100	100	200	
Outdoor Unit	Dim. (HxWxD) (mm)	1,762x1,320x854	1,911x1,621x942		1,855x1,857x1200		2,153x2,200x1,367	
	Weight (kg)	300	330	350	400	430	1080	
	Condenser	Cross fin coil						
	Type	Scroll x2						
	Quantity	1	2	2	2	2	2 (※)	
Fan	Capacity Control(%)	0,100	0,50,100	0,50,100	0,50,100	0,50,100	0,50,100	
	Type x Quantity	Propeller Fan x2		Propeller Fan x1			Propeller Fan x2	
	Output	W	84+84	355	460	355	460	770+770
	Dim. (HxWxD) (mm)	mm	1320x930x370		1,308x1,685x630		1,417x2,000x960	
	Weight (kg)	kg	120	180	220	180	220	340
Starting type		direct	Sequence direct					
Power supply wiring	Outdoor unit & indoor unit fan							
Refrigerant & Control	R-410A/ Thermal expansion valve							
Controller	LED							
Indoor unit draining pipe	PS 1B							
Safety devices	Coil anti-frozen protection · High & low pressure switch Compressor thermal protector & 3-minute protection Indoor unit fan motor protection · Reversal phase protection							
Piping	Gas side	mm	ø19.1x1	ø19.1x2	ø19.1x2	ø19.1x4	ø19.1x4	ø28.6x2
	Liquid-side	mm	ø12.7x1	ø12.7x2	ø12.7x2	ø15.9x2	ø15.9x2	ø19.1x2

Notes:

- Cooling Capacity is based on indoor air temp. 27°CDB / 19°CWB ; outdoor temp. 35°CDB/24°CWB °
 - Cooling operation temperature limits: Indoor 21~32°C, outdoor 10~43°C.
 - Owing to technological advances, the above specifications might be updated without early notice.
 - 1 kW=860 kcal/hr, 1 kcal/hr=3.968 Btu/hr.
 - Sensible Heat Factor(S.H.F)=0.9
- ※: The compressors are placed in the indoor unit for model TSC-30NAF.
** ESP. means external static pressure.

Operation boundary

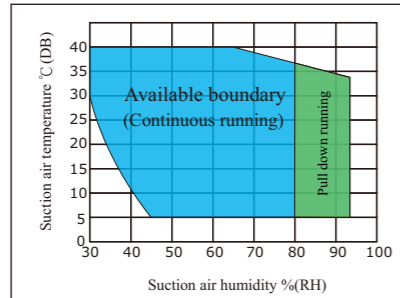


Commercial Dehumidifier

Features:

- ▶ **Wide-temperature application:** Tatung Dehumidifier can operate smoothly at the room temperature from 5°C to 40 °C.
- ▶ **Large dehumidifying capacity.**
- ▶ **The dirt can be removed through the filter and keep the room air clean.**
- ▶ **Unique unit designing makes energy-saving and easily installation.**
- ▶ **LED-display controller: operate the unit more easily and friendly**
- ▶ **Safety devices: protect the unit from unexpected damage.**

Operation boundary



Specifications

Model	TCD-3NA	TCD-5NA
Power Source	3ø 4W 380V 50Hz	
Capacity (L/day)	142	246
Based condition	27°C 60% RH	
Running current (A)	4.9	8.0
Power consumption (KW)	2.70	4.50
Compressor	Type	Scroll*1
	Adjust %	100,0
Cooler (Evaporator)	Cross-fin coil	Cross-fin coil
Re-Heater (Condenser)	Cross-fin coil	Cross-fin coil
Fan	Type	Multi-blade
	Air flow CMM	30
	Output kW	0.11
Air Filter	Nylon	
Refrigerant Control	Thermal expansion valve	
Humidity regulator	LED Micon	
Defrost method	Compressor OFF	
Safety Devices	High and Low pressure switch, Compressor internal protector, Phase reversal protector.	
Refrigerant type	R-410A	
DIM.	Height mm	1700
	Width mm	750
	Depth mm	380
Weight kg	133	180
Draining pipe	PS 1B	

Dimensions of Dehumidifier

① Upper draining fitting	③ Wiring line Inlet
② Lower draining fitting	④ Grounding bolt terminal

