

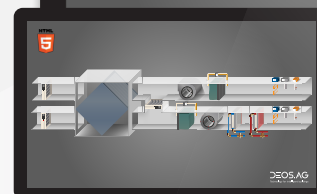


## Distributed controls at the highest BACnet Level! OPEN 600 EMS I24 and I32

The new OPEN 600 I Series has been designed specifically for HVAC/R, -single or multiple room applications based on IP communication.

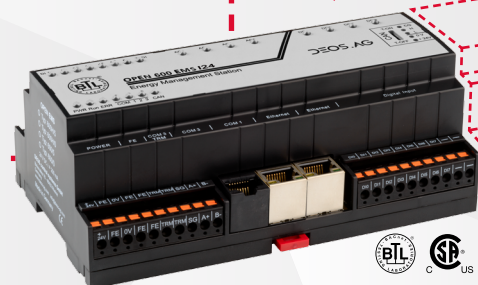
### One controller – various applications

- Native BACnet – Support of BACnet IP and MSTP
- Embedded Webserver – Direct access via HTML5
- Flexible IO's – connect up to 5 OPEN IO Modules
- Real-time Clock – Battery backed
- Various protocols supported
- Send Emails & SMS directly from the Controller
- Point LED Indication – LEDs for status indication
- Local Document Storage directly on the controller
- Fast & intuitive function block programming

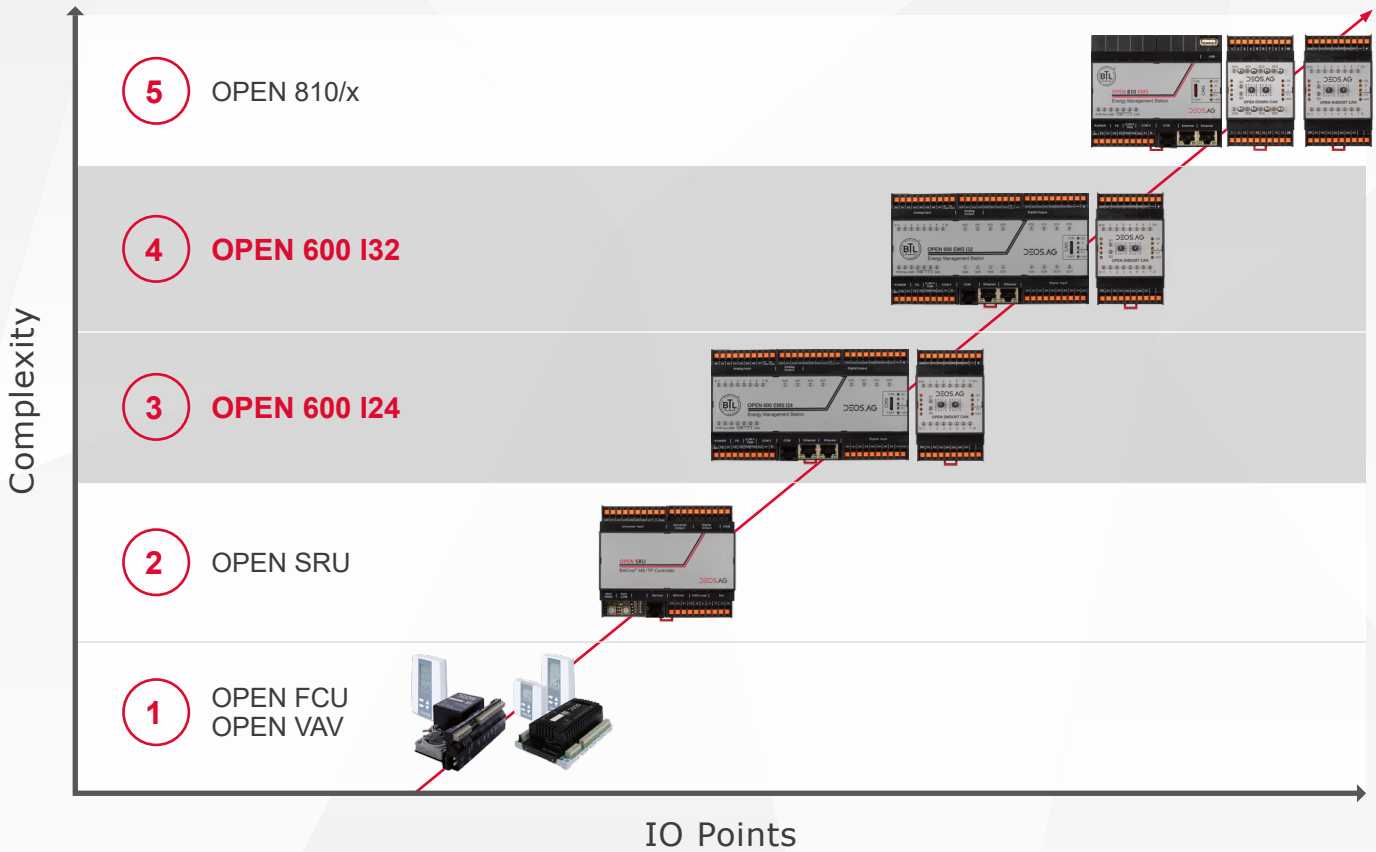


Providing Information

Receiving Information



# Controller Matrix



## Application examples

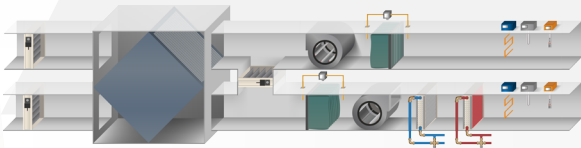
### 1 Variable Air Volume Boxes & Fan Coil Units



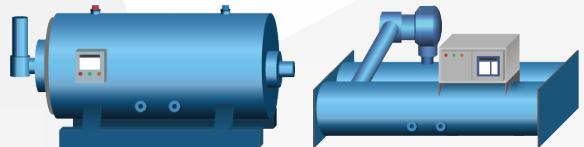
### 2 Roof Top Units & Room Applications



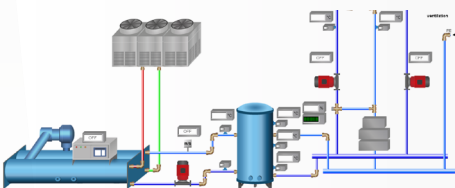
### 3 Air Handling Units



### 4 Boilers & Chillers



### 5 Central Plant



PRODUCTS MADE IN  
**GERMANY**

